

TMA (C) København:	50 NM/MAX FL 250
COPENHAGEN APPROACH	<b>119.800</b> (da, en)
(APP) 50 NM/MAX FL 150	VDF
ROSKILDE APPROACH	<b>125.525</b> (da, en)
(TWR) 25 NM/MAX 4000'	VDF
ROSKILDE TOWER	<b>118.900 119.650</b> (da, en)

EKRK

Elev **146'** / 45 m

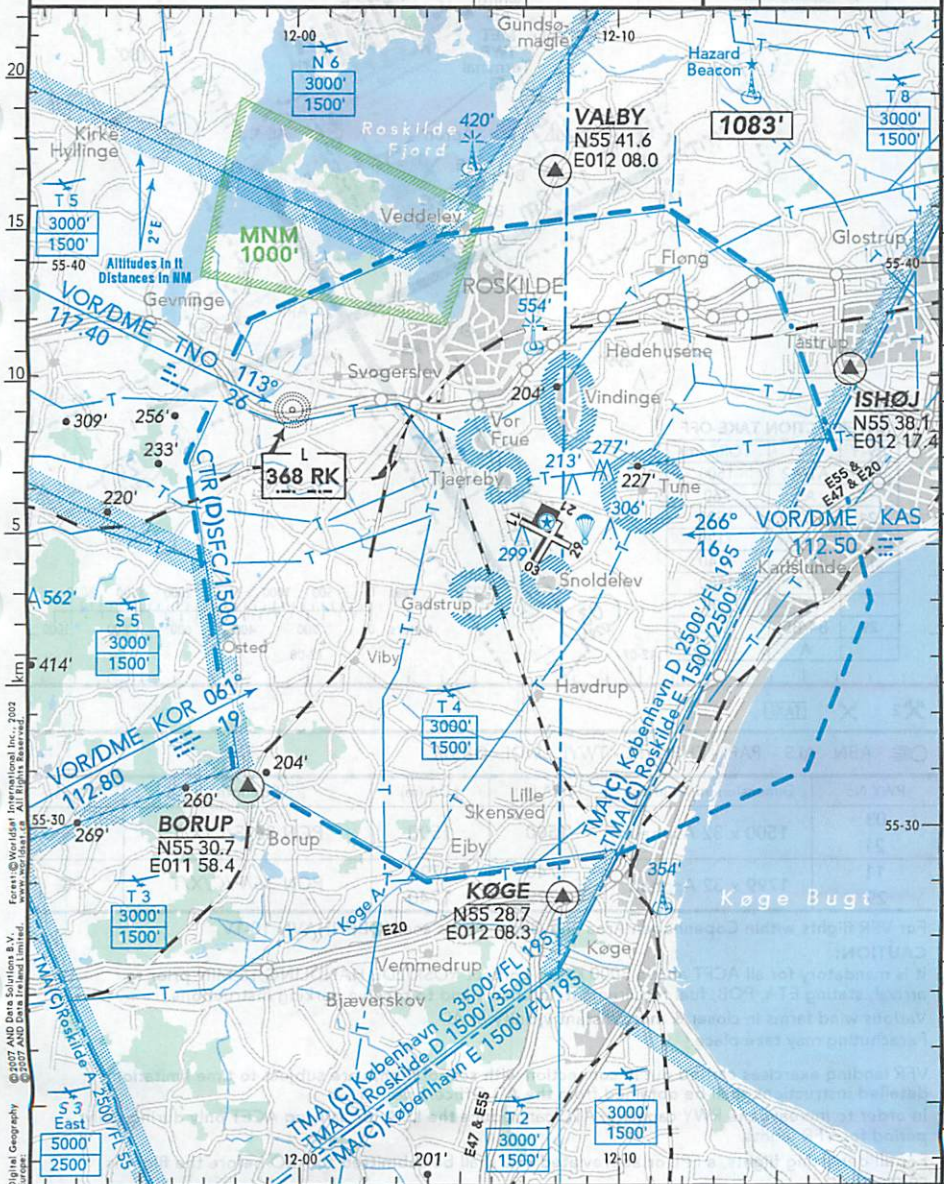
N55 35.1  
E012 07.9

4 NM SE Roskilde

ATIS **123.800**

\*ILS/DME freq paired.

RWY	ILS	RWY	ILS
11*	111.50 KV 114°	21	108.70 SN 209°



124-79

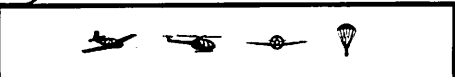
SCALE 1:250 000

Digital Geography © 2017 AND Data Solutions B.V.   
 Jeppesen © Jeppesen International Inc. 2002   
 All Rights Reserved.   
 Jeppesen © Jeppesen International Inc. 2002   
 All Rights Reserved.   
 Jeppesen © Jeppesen International Inc. 2002   
 All Rights Reserved.

**KØBENHAVN**  
**ROSKILDE**  
**DENMARK**

(29-2) 03 JUL 15

**JEPPESEN**

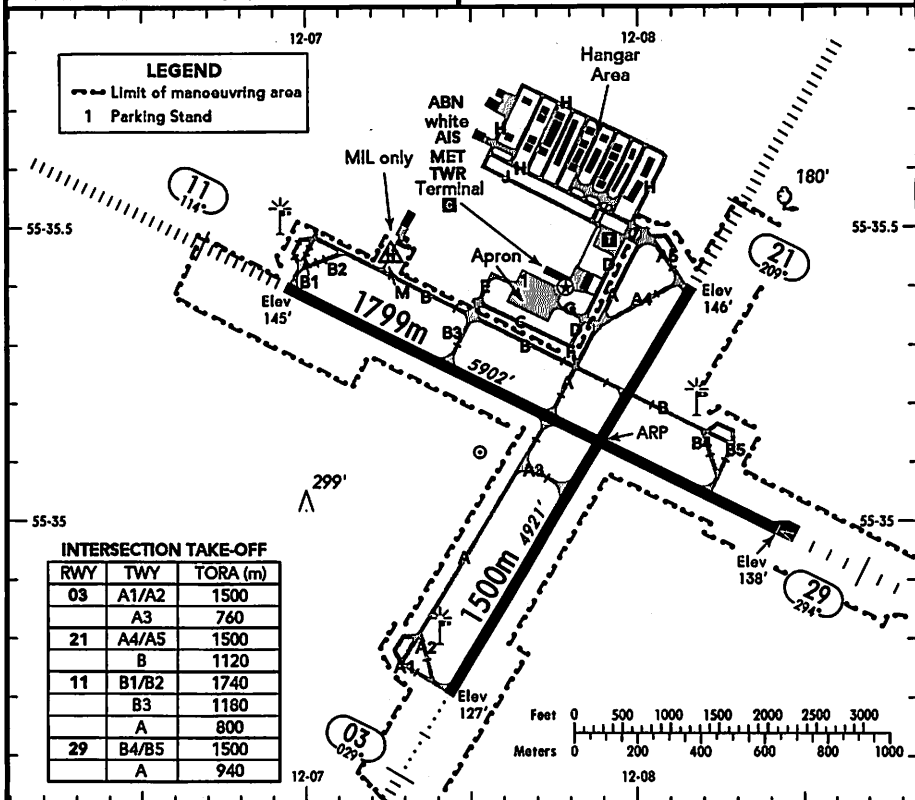


ATIS **123.800**

ROSKILDE HANDLING **131.550**

(FIS)

KØBENHAVN INFORMATION **127.075**



**✈ 2 ✕ TAXI**

**☉ ABN - ALS - PAPI - THRL - RL - TWYL - WDI - OBSTL.**

RWY No	Dimension (m) - Surface	TORA (m)	LDA (m)	Strength	Lights
03	1500 x 32 Asphalt	1500	1500	PCN 36/F/C/X/T	☉
21					
11	1799 x 32 Asphalt	1740	1799	PCN 36/F/C/X/T	☉
29					

For VFR flights within Copenhagen Area and Glider Areas see KØBENHAVN 10-1V.

**CAUTION:**

It is mandatory for all ACFT above 3000 KG to contact ROSKILDE HANDLING 15 MIN prior to arrival, stating ETA, POB, fuel requirement, intension and to receive parking instructions.

Various wind farms in closer & more distant vicinity of AD.

Parachuting may take place.

VFR landing exercises carried out in connection with school flights are subject to time limitations, detailed instructions shall be obtained from the AD Office/Briefing.

In order to increase the RWY capacity, ATC can reduce the LDA for arriving ACFT only during daily period for VFR flights.

For all departing flights, a FPL or abbreviated FPL shall be submitted to ARO before the flight is commenced.